



# BKG



**SERVICE LINE**

## BKG BUNSE-AUFZÜGE GmbH

ENGLISH



# BKG BUNSE-AUFZÜGE GMBH



## TRADITION MEETS TECHNOLOGY



For 75 years, we have been your specialist for small goods and goods lifts and one of the leading manufacturers in this market segment worldwide. As an exclusive supplier to the lift industry, our customers, from small lift installation companies to global players, rely on our know-how and our products.



# WE ABOUT US

## Our experience - your advantages

BKG Bunse-Aufzüge GmbH has been your specialist for small goods and goods lifts worldwide for 75 years. The medium-sized family business was founded by Hans A. Bunse and is now being run by the 2nd generation. Many years of experience as well as continuous further development characterise our corporate culture and are the basis for our sustainable success. Internationally, we are one of the leading companies in this market segment.

## Our products - your choice

Well over 100,000 delivered systems in more than 80 countries speak for themselves. In addition, there are a large number of modernisations and conversions of existing systems. For reliability, short assembly times and a long service life, our high-quality products are known worldwide.

From dumbwaiter and goods lifts to complex automatic systems and special solutions, e.g. for shipbuilding, we realise projects with our customers all over the world.



## Our claim - your satisfaction

The customer's wishes come first for us. As one of the largest suppliers to the lift industry in this segment, we know how to understand and implement the needs and demands of our customers.

Local customer requirements are taken into account, as are country-specific technical requirements and special features. Tolerance, openness and fairness characterise our dealings with our customers.

## Our employees - your partners at eye level

Satisfied customers are the basis for a successful company. But good products and services are only created when employees are satisfied and feel good.

Our employees are the most important asset with regard to the further expansion of the company. Flat hierarchies, short decision-making processes and a balanced mix of young and experienced employees are further success factors that distinguish us.







# GLOBAL NETWORK



## FROM PADERBORN TO THE WORLD

More than 100,000 delivered systems in more than 90 countries speak for themselves. In addition, there is a large number of modernisations and conversions of existing systems. Convince yourself of our extensive product range!





## SERVICE LINE

The **service line** dumbwaiter is a multi-talent for the transport of small to medium-sized goods in the private sector, hotel/restaurant sector, hospitals, office buildings, retail trade, etc.



## CARGO LINE | CARGO LINE+

Our **cargo line** goods lifts are the ideal solution when heavy loads have to be transported. The **cargo line+** variant also allows the transport of an additional accompanying person.



## AUTOMATIC LINE

The **automatic line** is the right choice when a fast material flow or quick availability is required. Be it mail distribution in office buildings, book sorting in libraries or sterile goods transport in hospitals.



## MARINE LINE

Special circumstances require special solutions. Our **marine line** is based on our small goods and freight lifts, which we convert for use on inland and deep-sea waters.



# SERVICE LINE

Compact, flexible as well as quick and uncomplicated to assemble: this is how our **dumbwaiters** can be summed up. Add to that what you can expect from a machine designed and manufactured in Germany: Quality at the highest level combined with a long service life. The dumbwaiter is an all-rounder for the transport of small to medium-sized goods in the private sector, hotel/restaurant sector, hospitals, office buildings, retail trade, etc.

In addition, our proven modular system allows any adaptation to almost any structural situation and the individual lines can thus even be combined with each other. A space-saving sliding door at the bottom on pleasant serving height, but a revolving door on top, which is placed under the counter? No problem for us! Our extremely flexible concept allows us to adapt to the respective conditions at any time.

Are you worried that the food might cool down too much? Then we will equip the cabin with a floor or shelf heater.

Problematic environment due to dust or moisture? Then we deliver the lift optionally with protection class IP44 or IP65! In addition to a wide range of already available equipment options and materials, we can also realise the most individual wishes at any time.

All lift systems are supplied with a robust supporting frame, which is quickly and easily assembled and accommodates all lift components. The cabin, doors, control system, shaft installation... Everything is pre-assembled at the factory and can be easily installed by qualified personnel.

The equipment is also individually selectable and can be flexibly adapted to the respective application. You can choose from a wide range of standard materials and extensions, but we also realise individual surfaces or special customer requests.

## SERVICE LINE CLASSIC

- With vertical sliding doors at serving height for various application areas



## SERVICE LINE BASE D

- With revolving doors at floor level



## SERVICE LINE BASE S

- With vertical sliding doors at floor level



## SERVICE LINE COMBI

- Combines the service lines CLASSIC and BASE D in one lift



## SERVICE LINE DOC

- With hinged doors at serving height



## SCAN QR CODES

and go directly to the technical data sheet





The Reichstag building in the German capital is not only the seat of the German Bundestag, but also a popular tourist attraction. Inside the walk-in glass dome there are no less than 2 **service line CLASSIC** lifts, which ensure that guests are provided with snacks and drinks quickly and easily.



 **SERVICE LINE**

 **REICHSTAG, BERLIN**



# CARGO LINE

The cargo line is the right choice in the „heavy duty“ sector. Extremely robust and reliable, yet just as flexible as our dumbwaiter. The cargo lifts are divided into the **cargo line COMPACT** and **cargo line TOWER** lines. Both lines are supplied including scaffolding, which is adapted in each case to the different needs or specifications of the building owner.

While the **cargo line COMPACT** is designed for load-bearing shafts, the **cargo LINE TOWER** comes with a completely self-supporting structure including optional cladding.

Our goods lifts are electrically driven, thus eliminating additional environmental and cost factors such as those required for hydraulic lift systems.

The components used are extremely low-wear and low-maintenance, thus minimising long-term operating costs.

Numerous satisfied customers, from small warehouses over 2 floors to industrial operations with the most difficult environmental conditions, reflect the success of our cargo lines.



## CARGO LINE COMPACT

- Compact design for load-bearing shafts
- Incl. mounting structure for uncomplicated installation
- Optional fire doors



### SCAN QR CODE

and go directly to the technical data sheet

## CARGO LINE TOWER

- Self-supporting shaft structure
- Complete solution including cladding



### SCAN QR CODE

and go directly to the technical data sheet



The Museum of the Future is the latest eye-catcher in Dubai. The seven floors of the 77-metre high new building by architect Shaun Killa are enveloped by a 17,000 square metre stainless steel façade. Several **cargo line COMPACT** lifts ensure the smooth and gentle transport of the exhibits behind the scenes.



 **CARGO LINE**

 **MUSEUM OF THE FUTURE, DUBAI**



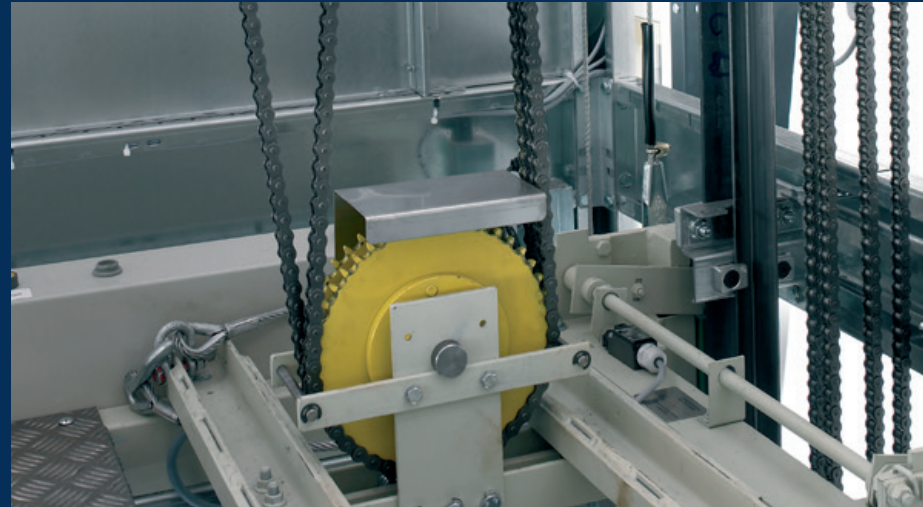
# CARGO LINE+

The **cargo line+** brings all the advantages of our cargo line goods lifts and at the same time offers the option of one person travelling with it. Like our cargo line, the cargo line+ is designed on the basis of the current Machinery Directive and is also type-tested. The interior control is a so-called „dead man’s control“, while a pick-up and send control is integrated on the outside.

Like our cargo line, the cargo line+ is divided into the variations **COMPACT** and **TOWER**. Both lines are delivered including structure, which is adapted to the different needs or specifications of the building owner.

While the **cargo line+ COMPACT** is designed for load-bearing shafts, the the **cargo line+ TOWER** with a completely self-supporting frame including optional panelling.

Our goods lifts with attendant are electrically driven, thus eliminating additional environmental and cost factors such as those required for hydraulic lifts. The components used are extremely low-wear and low-maintenance, thus minimising long-term operating costs.



## CARGO LINE+ COMPACT

- Compact design for load-bearing shafts
- Incl. mounting structure for uncomplicated installation
- Optional fire doors



### SCAN QR CODE

and go directly to the technical data sheet

## CARGO LINE+ TOWER

- Self-supporting shaft structure
- Complete solution including cladding



### SCAN QR CODE

and go directly to the technical data sheet



The most visited art museum in the world has over 35,000 exhibits. To ensure that this enormous number of exhibits can find its place, our **cargo line** works in a robust and space-saving way. Our custom-made freight lifts enable the reliable transport of both light and heavy goods, not only in the Louvre.



 **CARGO LINE+**

 **LOUVRE MUSEUM, PARIS**



# AUTOMATIC LINE

For fast material flow, our **automatic line** is the best choice! Be it mail distribution in office buildings, book sorting in libraries or sterile goods transport in hospitals. Simply pick up the lift, place the containers on the roller conveyor, select the destination stop and the **automatic line SEMI** takes care of the rest. Is this already taking too long for you? Then the **automatic line COMFORT** is the right choice: set the target stop on the container, place it on the roller conveyor, done!

The automatic line is based on our dumbwaiters and is designed and tailored by us precisely to the respective project. We can draw on many years of experience in this field, with several hundred successfully developed and implemented projects, ranging from 2-stop semi-automatic lift to the complete conveyor system with 12 fully automatic systems networked with each other. Simply contact our sales team, we will be happy to support you in the planning and implementation of an automatic system!



## AUTOMATIC LINE COMFORT

- Fully automatic transport of containers
- Including double-decker roller conveyors for automatic loading and unloading on the destination stop
- Cabin with a reader for recognition of the destination stop
- Roller conveyor in destination stop
- Optional connection to customer's conveyor system



**SCAN QR CODE**

and go directly to the technical data sheet

## AUTOMATIC LINE SEMI

- Semi-automatic transport of containers
- Manual loading
- Automatic feed and positioning of the Container
- Automatic unloading on roller conveyor at destination stop



**SCAN QR CODE**

and go directly to the technical data sheet



In cooperation with a conveyor technology specialist, a fully automatic book transport system based on the **automatic line** was realised at Humboldt University Berlin. Students can hand in their books at any time. These are scanned fully automatically and then brought to their place via containers.



📍 **AUTOMATIC LINE**

📍 **HUMBOLDT UNIVERSITY, BERLIN**



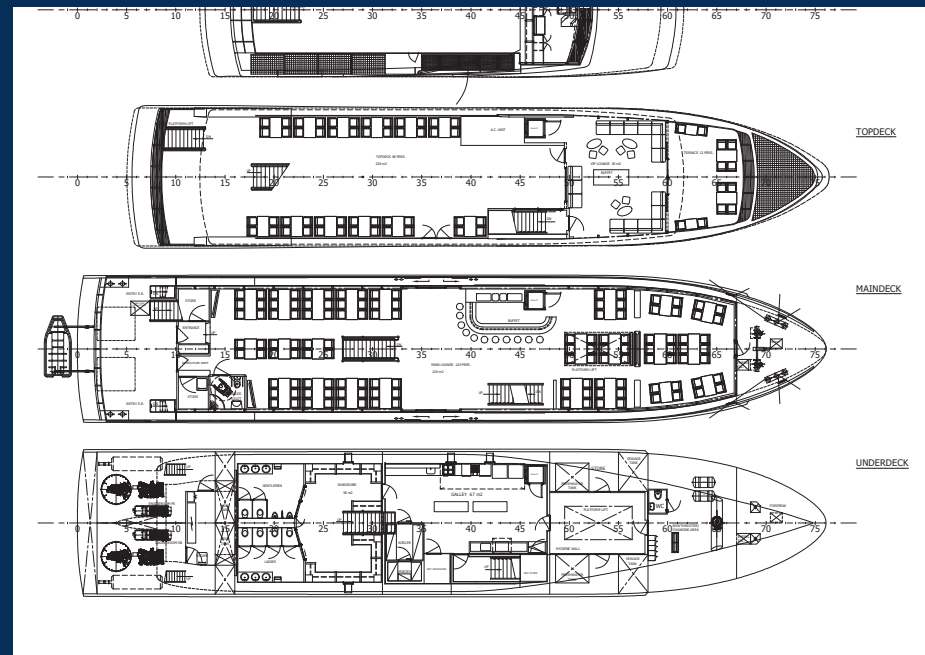
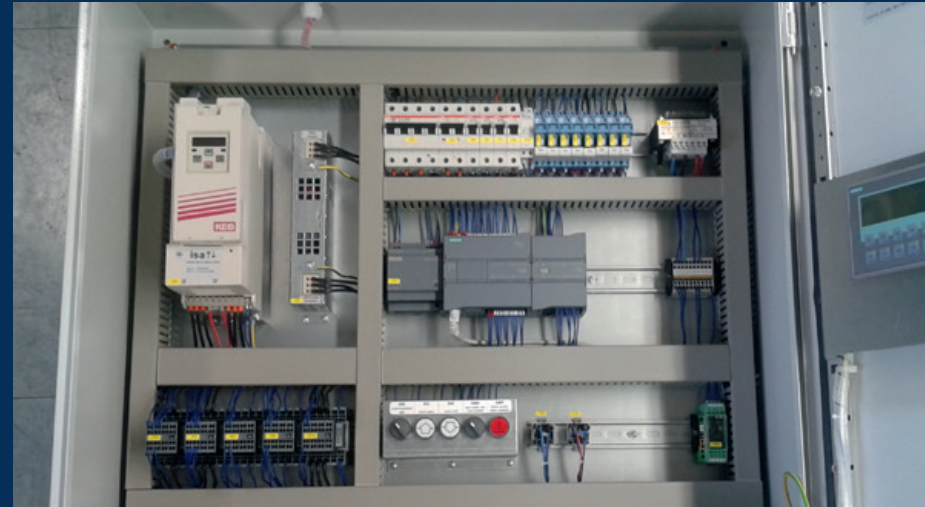
# MARINE LINE

Special circumstances require special solutions. When used on ships, the material faces great challenges: salty and humid air, ship movements and particularly high or low temperatures are just some of the problems that have to be overcome.

Our **marine line** is based on our small goods and freight lifts, which we convert for use on inland and deep-sea waters. Over the years, we have built up an outstanding reputation in this sector - numerous renowned shipyards rely on our lift systems.

Although a niche market, our marine line has a wide range of applications: we supply specially adapted lift systems for inland vessels, superyachts, cruise ships as well as freighters, naval vessels and drilling platforms. Our lifts are prepared for acceptance by classification societies such as DNV, ABS and RINA. Special requirements such as A60 landing doors, special coatings or extreme environmental conditions are no problem for us.

In addition, we have access to a worldwide network of specialised lift companies that supply our lift systems in this sector distribute, install and maintain.





True to the motto „Around the world with BKG“, we also accompany the traditional Norwegian postal shipping line Hurtigruten on its long voyage with **cargo line+**. The lifts offer the advantage of fast loading and unloading through the direct ride of an authorised attendant. With the help of our technologies, we are setting the anchor for simple transport routes for goods in shipbuilding, among other things.



**MARINE LINE**

# COMPONENTS & SPARE PARTS

Why always go for a new lift when you can modernise without too much effort? We offer a variety of solutions for your lift systems.

## Spare parts

We have been building individually designed lift systems for 75 years. Therefore, of course, an almost inestimable number of components and individual parts have been installed. Our extensive archive with data from more than 90,000 files nevertheless allows us to quickly and easily identify the right spare part and, ideally, dispatch it from our warehouse on the same day.

If a spare part is no longer available, we always offer an alternative so that your lift system is back in operation as quickly as possible. Even with lift systems that do not originate from our company, in many cases we can quickly identify and supply spare parts on the basis of technical data and pictures.

## Modernisations

In addition to our lifts, we offer a wide range of solutions for the modernisation of existing installations. From upgrading to current standards („state of the art“) to conversion and total replacement, almost anything is possible. We manufacture and supply customised cars, landing doors, drives and even complete control systems in our production facilities in Paderborn. We do not limit ourselves to the systems we manufacture, but can also exchange and adapt components from other manufacturers that may no longer exist.

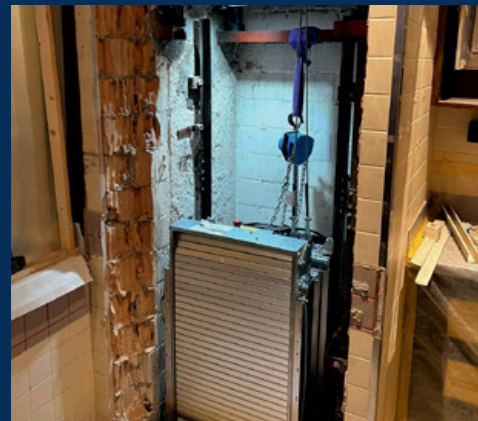
A massive advantage here is that we can adapt the components individually to the existing situation and still functioning components, thus minimising the construction work.

## When does modernisation make sense?

- Many old buildings are subject to monument protection due to their age or their cultural-historical significance and therefore no major structural changes are usually permitted.
- Mandatory preservation of the existing car size (e.g. with existing transport trolleys)
- Existing shaft frames and/or guide rails must remain in the shaft for static or structural reasons
- Local conditions do not allow the opening of the lift shaft (e.g. existing restaurant operation).

In addition to a complete modernisation, we can also replace only individual elements. For example, it is conceivable that only one engine or only the complete control system including all electrical components is modernised.

In the case of existing installations from our company, there is also the possibility of a stop extension, be it an additional stop upwards or downwards; we have already successfully delivered and implemented both variants many times.





## Known for quality for generations

BKG Bunse has been known for its unwavering commitment to quality for generations. As a respected lift manufacturer, we have created a tradition based on innovation, precision and the highest standards.

Our tradition in manufacturing lifts has earned us an excellent reputation not only nationally but also internationally. Customers all over the world trust our products and appreciate the quality that goes into every detail.



## Precision craftsmanship

Our employees are true masters of their trade and have years of experience in the art of lift construction. They understand the importance of precision and care in every step of the manufacturing process.

From construction to assembly, every step is carried out with the utmost precision and dedication.



## Family business with global presence

Our company has its roots in Paderborn and is proud to have established a global presence. What began 75 years ago as a craft business has developed into an internationally recognised market leader.

With our global presence, we are proud to supply lifts to cities and countries all over the world. Our products are testaments to first-class German engineering and craftsmanship and are valued worldwide for their quality and reliability.









# #BKGfamily - MORE THAN A FAMILY

---

## What is the BKG Family?

The term „BKGfamily“ has emerged independently in recent years. First of all, it symbolises the type of cooperation with our representatives around the world, which clearly goes beyond the classic business relationship. The interaction is more than friendly and we want to further expand this type of cooperation under the hashtag #bkgfamily.

We would also like to invite our customers to become part of the #bkgfamily. After all, it is our customers who sell our products around the globe. And that is only possible if there is the highest level of trust in these products, but also in us as a supplier. We see our customers as part of our company and our family, and strive at all times to provide them with the greatest possible support.

On the other hand, we also demand this mutual cooperation from our suppliers. Our products are manufactured to the highest quality standards. And this only works if all suppliers follow this path. In addition to the quality of the supplier products, this also includes uncomplicated and flexible cooperation, both in terms of products and communication.

Our goal is to promote and expand this type of cooperation with our customers and suppliers worldwide. Our guiding principles are to deal with each other in a spirit of partnership and fairness, open to the world and without prejudice.

At the same time, the #bkgfamily also symbolises our corporate culture. Open communication, appreciation, Cohesion and support are the cornerstones that support the foundation of the #bkgfamily. And it is important for us to continuously expand and live these cornerstones.



---

## DISCOVER OUR FAMILY

---





## GET IN TOUCH:



[www.lifts.de](http://www.lifts.de)



[bunse\\_aufzüge](https://www.instagram.com/bunse_aufzuege)



BKG Bunse-Aufzüge GmbH



BKG Bunse-Aufzüge GmbH

## Bunse-Aufzüge GmbH

Merseburger Str. 5  
33106 Paderborn  
Germany

Phone: +49 (5251) 1733 0  
Mail: [bkg@lifts.de](mailto:bkg@lifts.de)  
Web: [www.lifts.de](http://www.lifts.de)



**SCAN QR CODE**  
and go directly to our  
online configuration tool